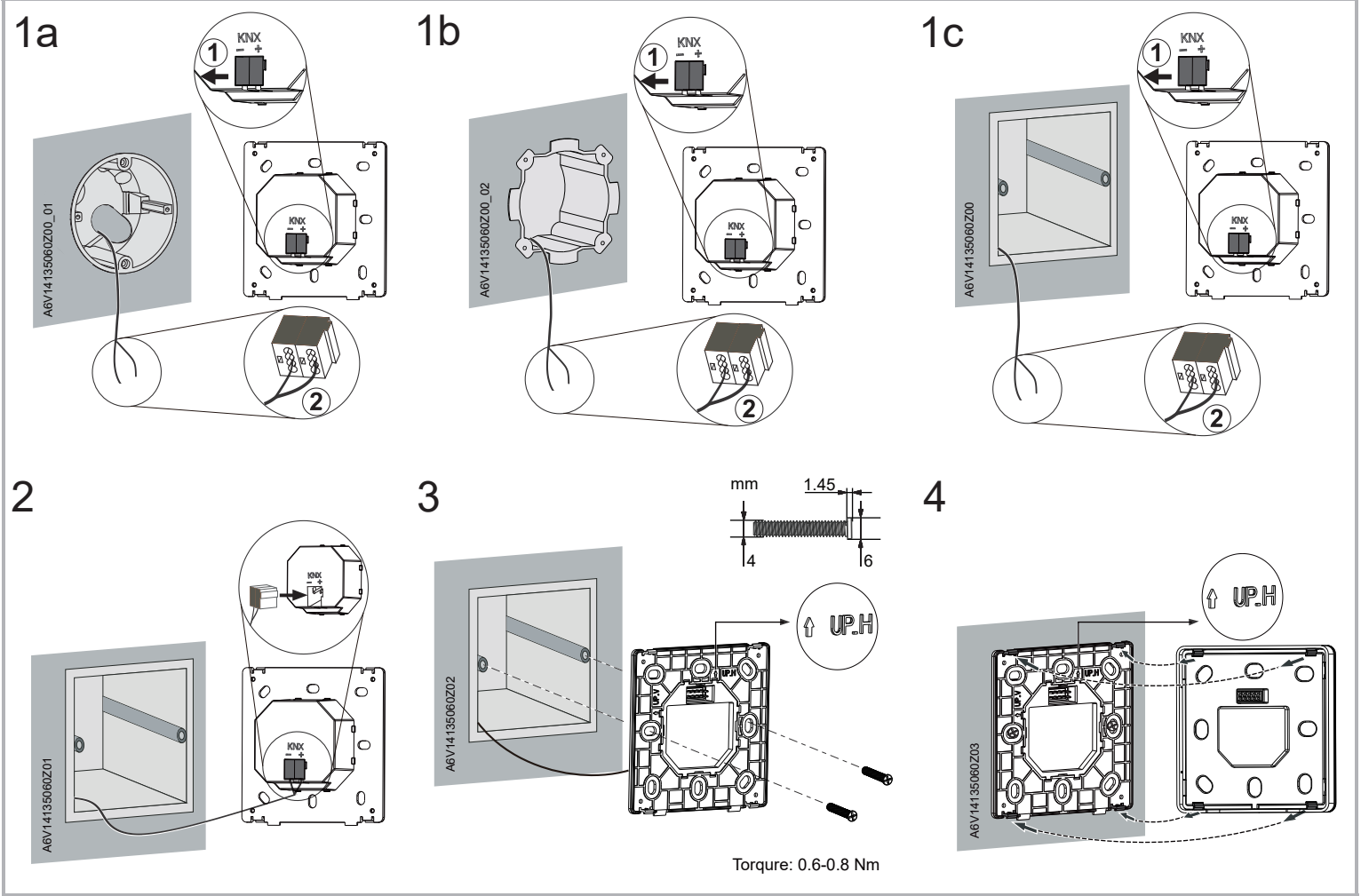
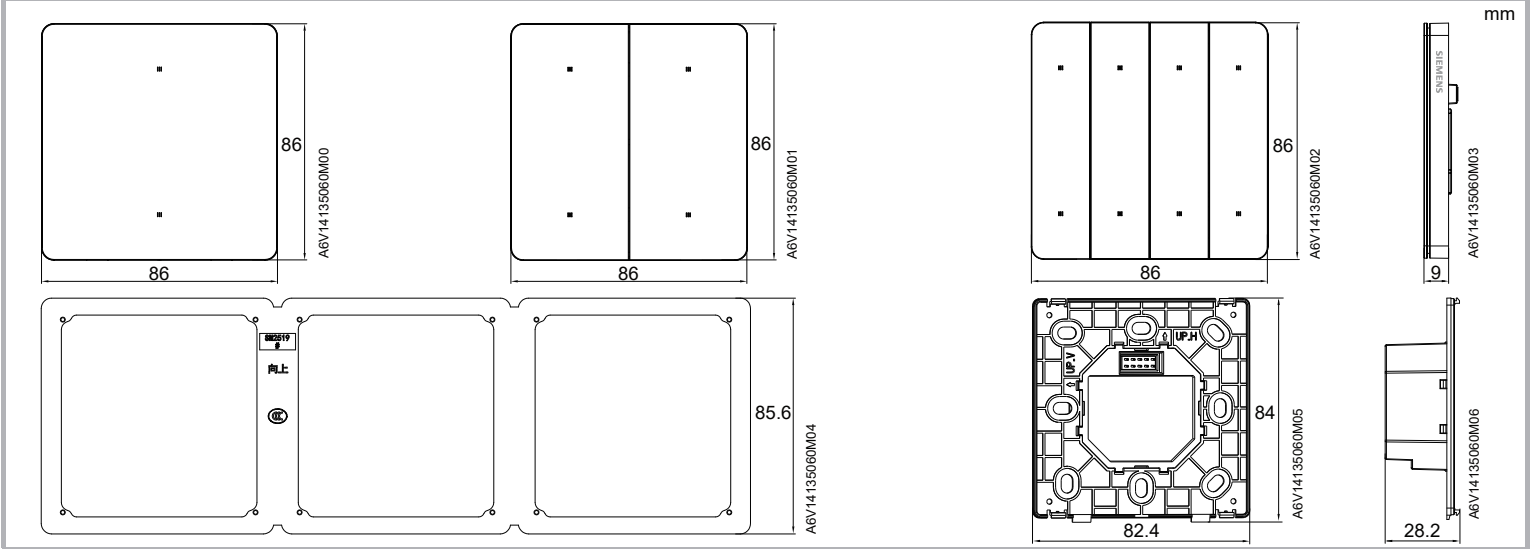


en Mounting instructions

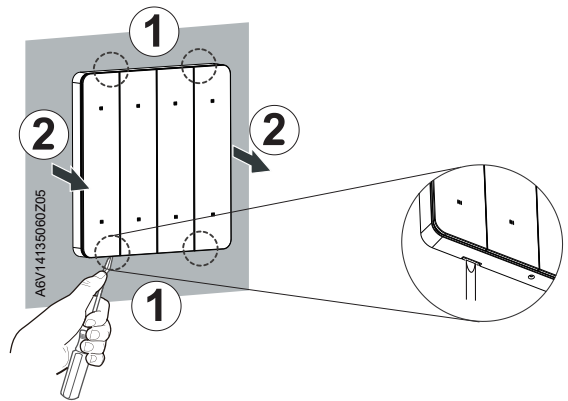
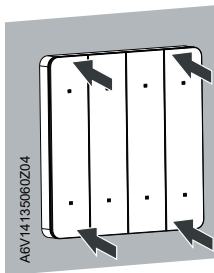
zh 安装指南

Product NO.	Product Name	产品名称
5WG1211-2AB13	Incendo Switch, 1-fold, white	Incendo 智能控制面板 单联双键 钛白色
5WG1211-2AB33	Incendo Switch, 1-fold, grey	Incendo 智能控制面板 单联双键 灰金色
5WG1212-2AB13	Incendo Switch, 2-fold, white	Incendo 智能控制面板 双联双键 钛白色
5WG1212-2AB33	Incendo Switch, 2-fold, grey	Incendo 智能控制面板 双联双键 灰金色
5WG1214-2AB13	Incendo Switch, 4-fold, white	Incendo 智能控制面板 四联八键 钛白色
5WG1214-2AB33	Incendo Switch, 4-fold, grey	Incendo 智能控制面板 四联八键 灰金色





5



KNX Bus

KNX+, KNX-

KNX+ KNX-

en

KNX operating voltage DC 21...30 V

zh

总线工作电压 DC 21...30 V



⇒ www.siemens.com/download?A6V14210883

Open Source Software (OSS)

All open source software components used within the product (including their copyright holders and the license conditions) can be found from the website <http://www.siemens.com/download?A6V14201178>.



en Disposal of electrical and electronic equipment

The symbol with the crossed-out waste container means that electrical and electronic products and batteries may not be disposed of in normal household waste. They must be placed in separate collection and recycling containers according to the applicable laws. Please also refer to any applicable national labelling requirements. Proper disposal helps save valuable resources and prevents potentially harmful effects to people and the environment. Spent batteries and accumulators that can be removed from old devices for disposal, must be removed and placed in the indicated disposal channels. You are responsible for deleting any personal data from old devices for disposal. The registered manufacturers or distributors of electrical and electronic devices have established a common system for returning old devices. Suppliers of electrical devices must accept the returned devices at no charge. You can return old devices to the original sales location or to recycling or collection centers for old electrical devices. Please contact your regional or municipal offices/authorities for information on recycling centers or collection centers for old electrical devices.

zh 电气及电子设备的废弃处置

画叉的垃圾桶图标表示电气电子设备及其电池不可作为生活垃圾处置。根据适用的法律,它们必须放置在单独的回收容器内。同时也请参照任何适用的国家标签规则。妥善处置有利于节约宝贵资源,也可防止对人类及环境带来的潜在危害。可拆卸的废弃电池及蓄电池必须拆除并且放置于指定的处置通道内。用户需将个人数据从废弃设备中清除。电气及电子设备的注册制造商或分销商已经建立了一个通用的旧设备归还系统。电子设备供应商必须免费接收归还的设备。用户可将旧设备归还至原销售地点或旧设备回收中心。关于旧设备回收中心的相关信息,请联系区域或市级办事处/授权部门。

Issued by
Siemens Switzerland Ltd
Smart Infrastructure
Global Headquarters
Theilerstrasse 1a
CH-6300 Zug
Tel. +41 58 724 2424
www.siemens.com/buildingtechnologies

© Siemens 2023
Technical specifications and availability subject to change without notice.

Siemens Switzerland Ltd. declares that the radio equipment types 5WG1211-2AB13, 5WG1211-2AB33, 5WG1212-2AB13, 5WG1212-2AB33, 5WG1214-2AB13 and 5WG1214-2AB33 are in compliance with Directive 2014/53/EU. The full text of the EU declaration of conformity is available at <http://www.siemens.com/download?A6V14686205>.